



2020 AGRÁRCENZUS



CROP PRODUCTION



HUNGARIAN
CENTRAL
STATISTICAL
OFFICE

SHARE OF AGRICULTURE, FORESTRY AND FISHERY IN TOTAL ECONOMY OF HUNGARY IN 2018

in terms of GDP:

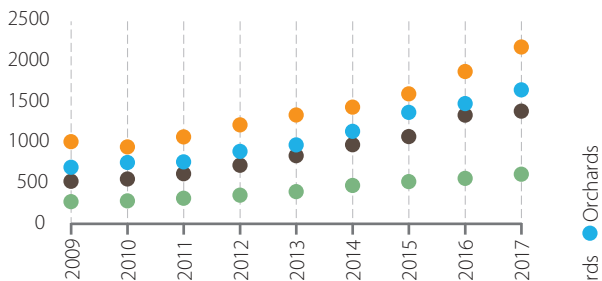
3.6%+

in terms of employment:

4.8%

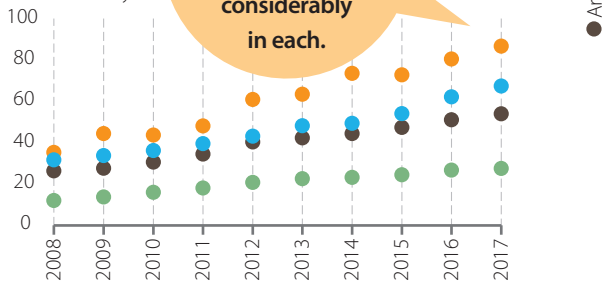
AVERAGE PRICE OF PRODUCTIVE LAND

Thousand HUF/hectare



LAND RENTS

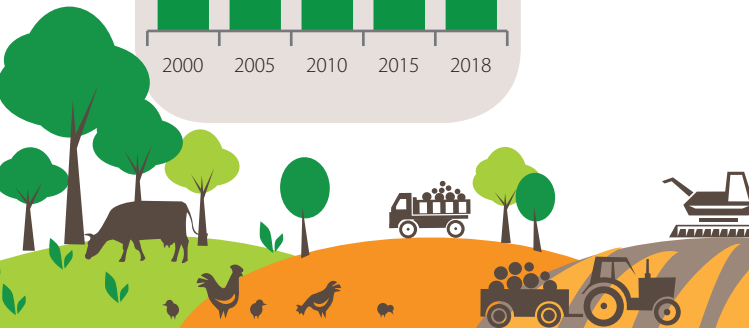
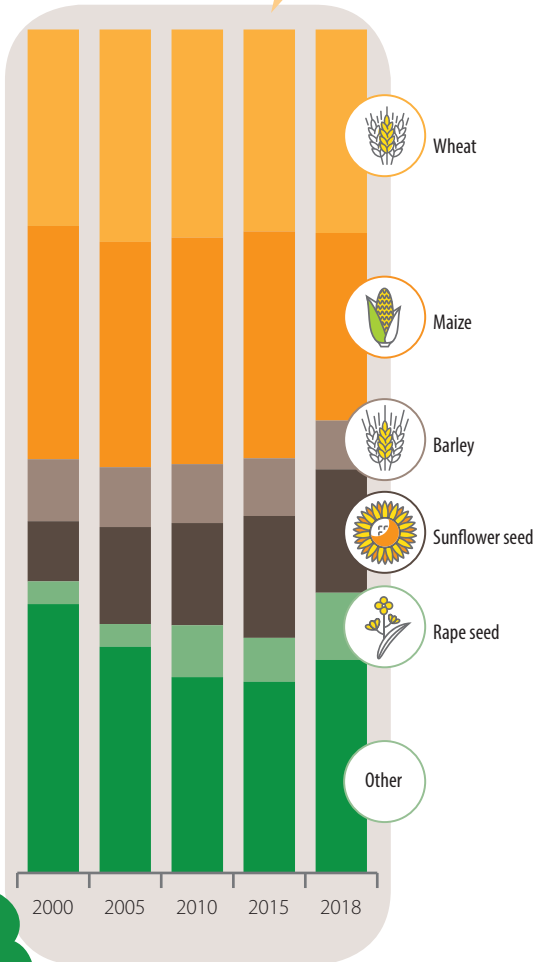
Thousand HUF/hectare/year



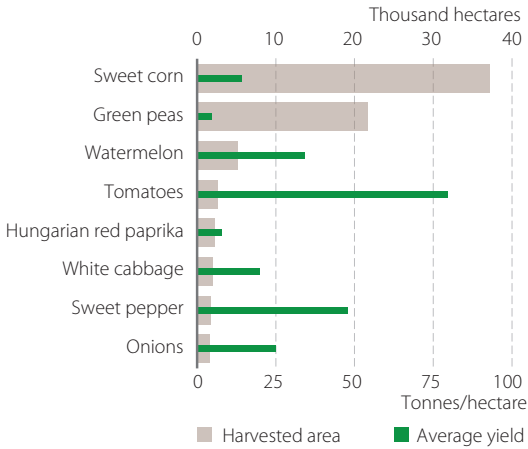
Land rents and land prices rose at different rates by land use category but considerably in each.

+ Preliminary data.

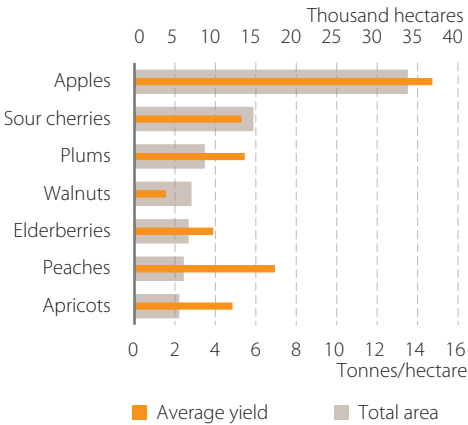
The proportion of the sown area of sunflower and rape increased within arable land area after 2000.



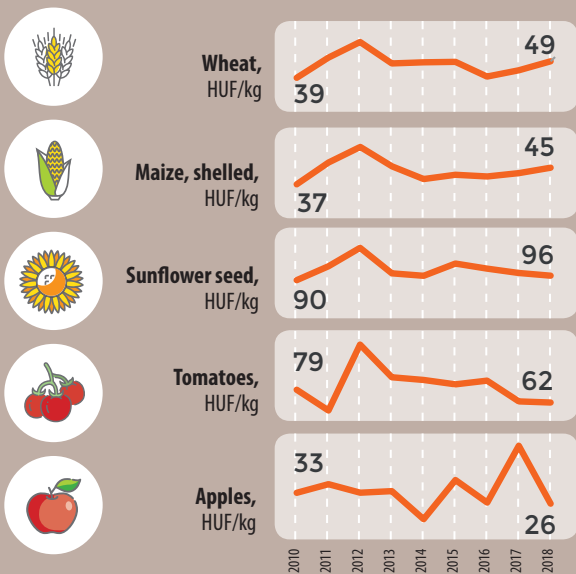
HARVESTED AREA AND YIELD OF MAIN VEGETABLES, 2018



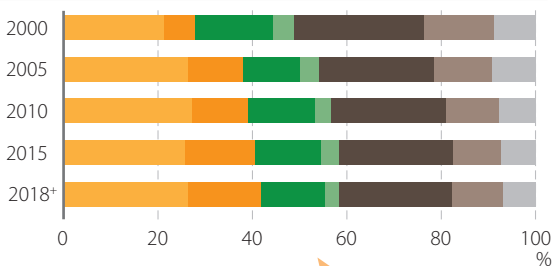
TOTAL AREA AND AVERAGE YIELD OF MAIN FRUIT SPECIES, 2018



AVERAGE PROCUREMENT PRICES



STRUCTURE OF AGRICULTURAL OUTPUT



- Cereals
- Industrial crops and forage plants
- Vegetables and fruits
- Other crop products
- Animals
- Animal products
- Services and secondary activities

The proportion of crop production output increased within agricultural production after 2000.

+ Preliminary data.

DATA ON AGRICULTURE FOR AGRICULTURE, AGRICULTURAL CENSUS, 2020

The Hungarian Central Statistical Office (HCSO) will carry out an agricultural census in 2020, referred to as, Agricultural Census, 2020'. The aim of the census is to follow up the structural changes in agriculture and to provide accurate and reliable data for national economic decision-makers, the EU and farmers. Respondents can contribute actively to achieving this goal by accurate reporting.

In view of the current epidemiological emergency and bearing in mind the protection of the health of respondents and our staff, the Hungarian Central Statistical Office redirects its censuses to contact-free channels. Thus, differently from earlier plans, it modified the time of on-line answering to the period between 5 June and 30 June, and of the enumerating tasks of the census to the period between 1 October and 15 December.



Information on agricultural censuses:
www.ksh.hu/agricultural_census_fss



Agricultural statistical data:
www.ksh.hu/engstadat
(4.1. Agriculture)



Dissemination database:
statinfo.ksh.hu/Statinfo/themeSelector.jsp?&lang=en



Publications:
www.ksh.hu/apps/shop.lista?p_lang=EN&p_temakor_kod=OM